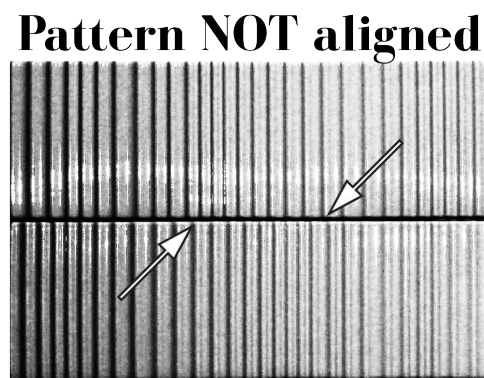
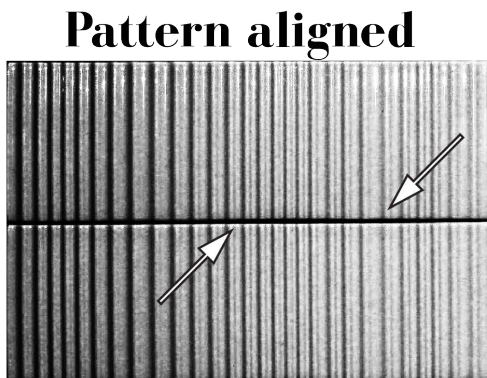
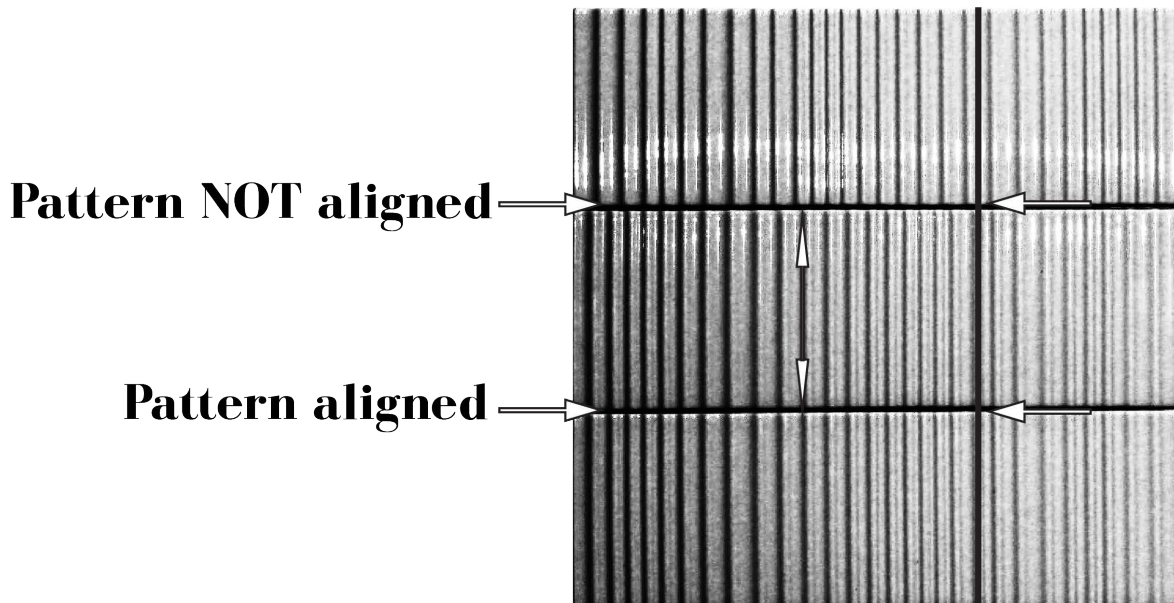


***Hamptons: Installation Guide**

IMPORTANT

Hamptons has a molded ridge pattern baked into the surface- The ridge pattern is the same on every tile, however, this pattern is **NOT symmetrical**

Please take note of the pattern alignment
between tiles in order to create your desired look



***Image coloration altered to emphasize the ridge pattern alignment**